

# Queijos e seus problemas

*Múcio M. Furtado, Ph.D.*









































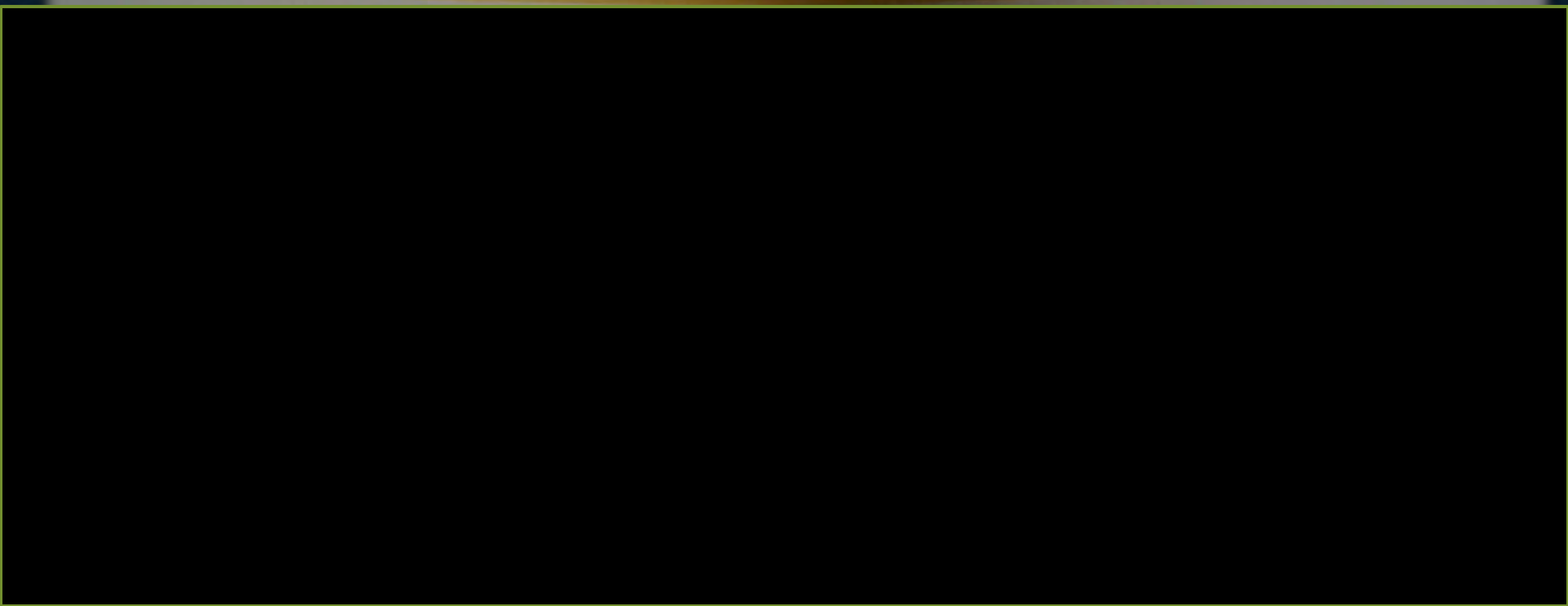
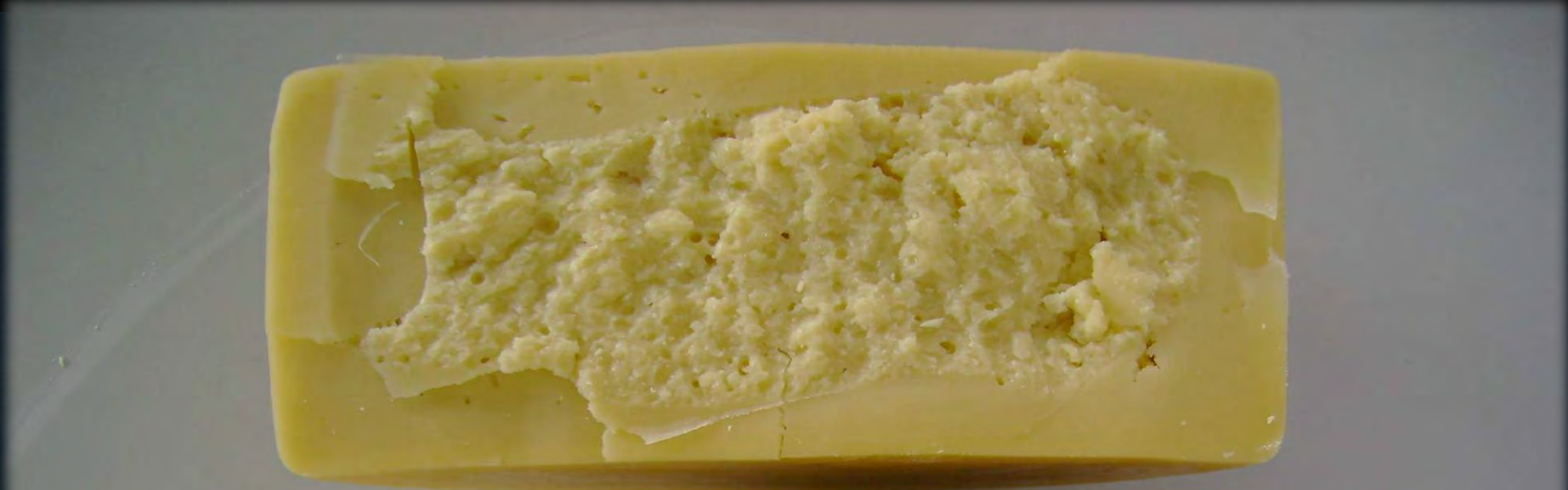












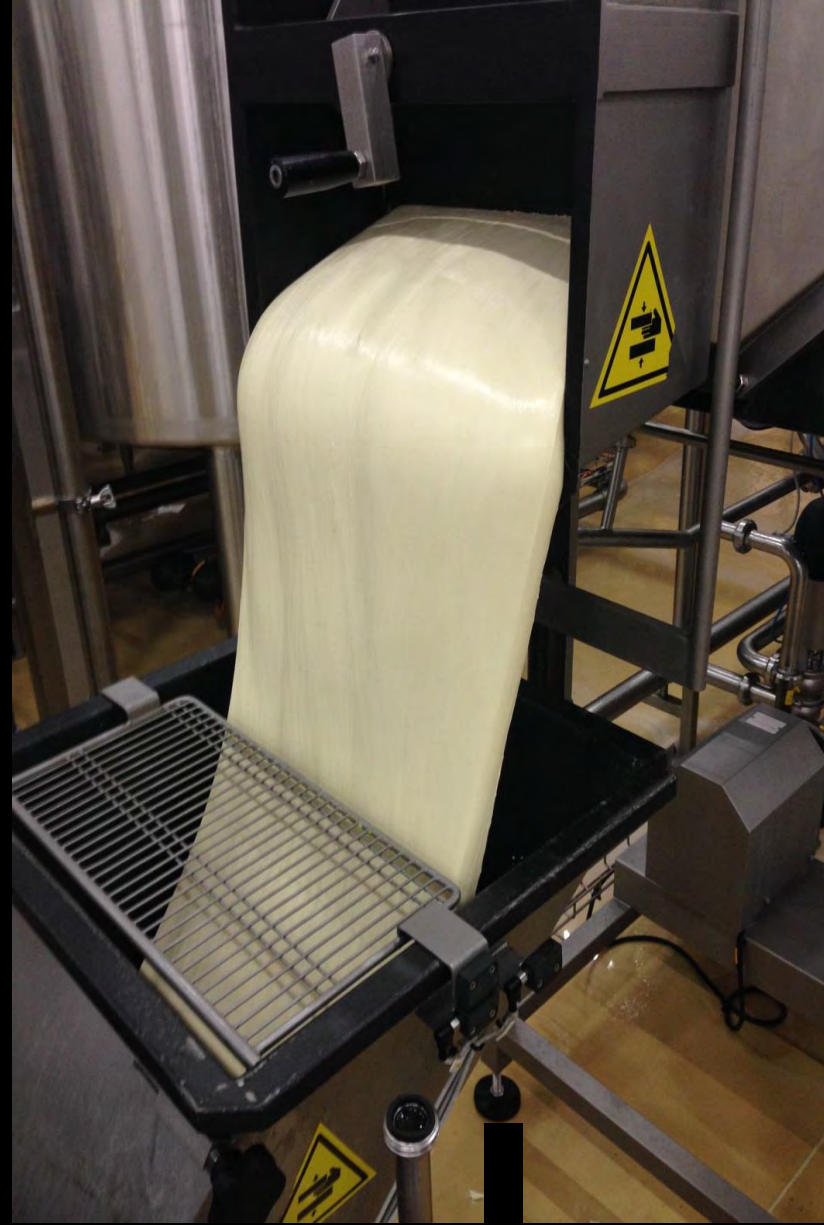








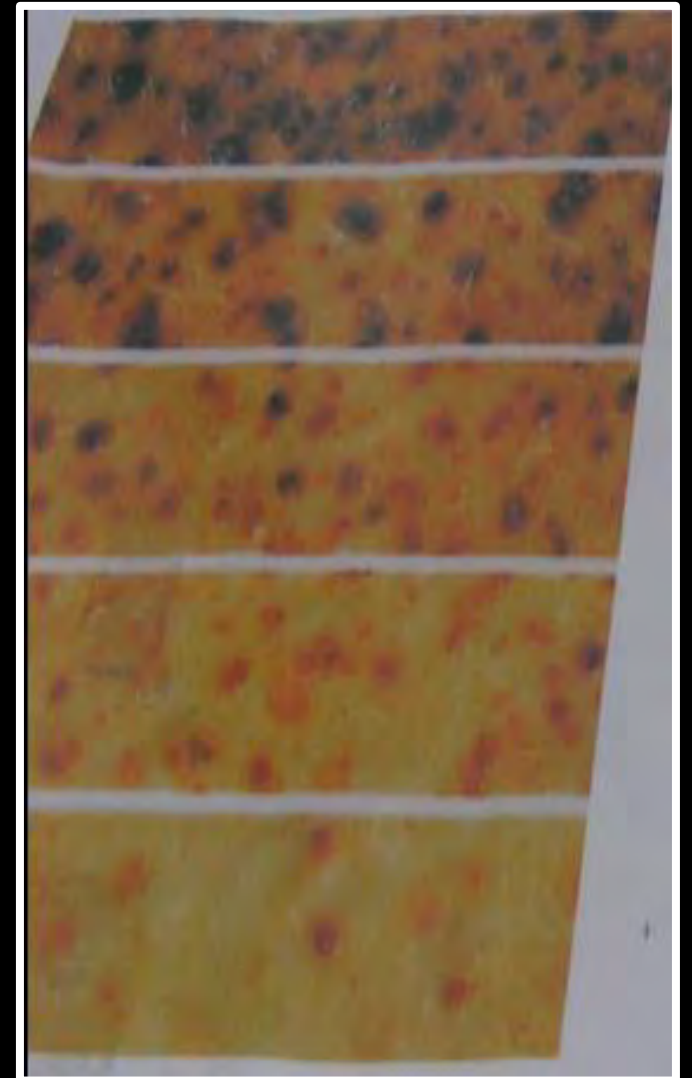
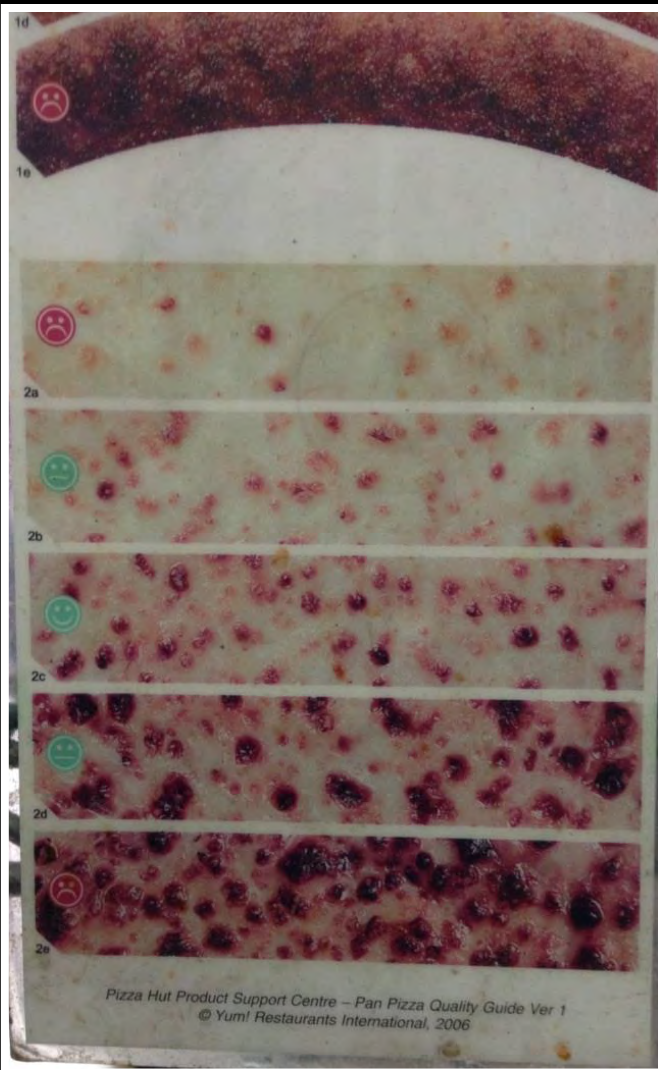


























2020  
06-06-06















Two glass jars filled with whey are shown side-by-side on a wooden surface. The jar on the left contains a greenish-yellow liquid, while the jar on the right contains a milky white liquid. A dark brown horizontal bar is overlaid across the middle of the jars, containing the text 'Verdoso x Leitoso'. Below this bar, a dark blue rectangular box contains the text 'SORO DE QUEIJO'.

Verdoso x Leitoso

**SORO DE  
QUEIJO**





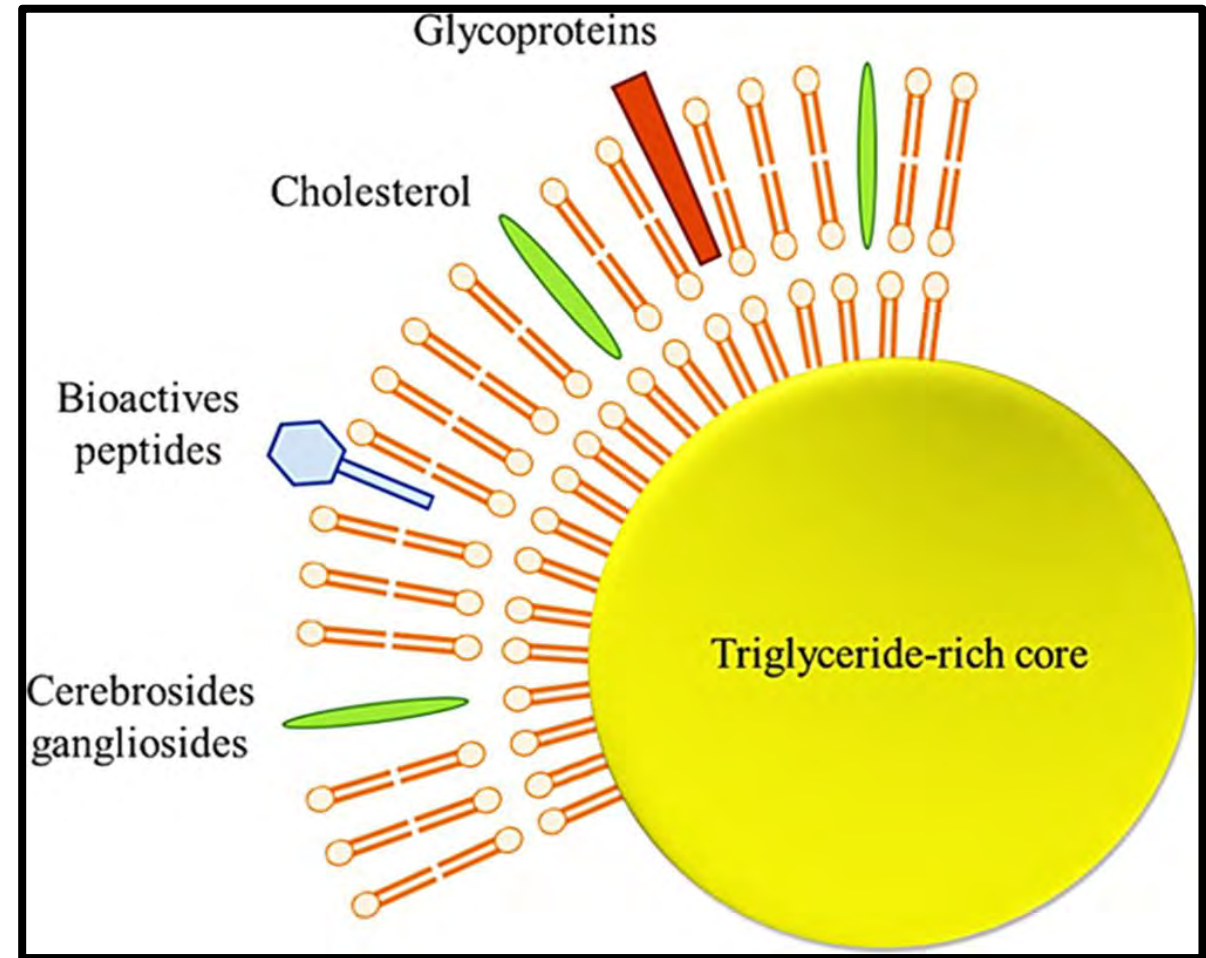
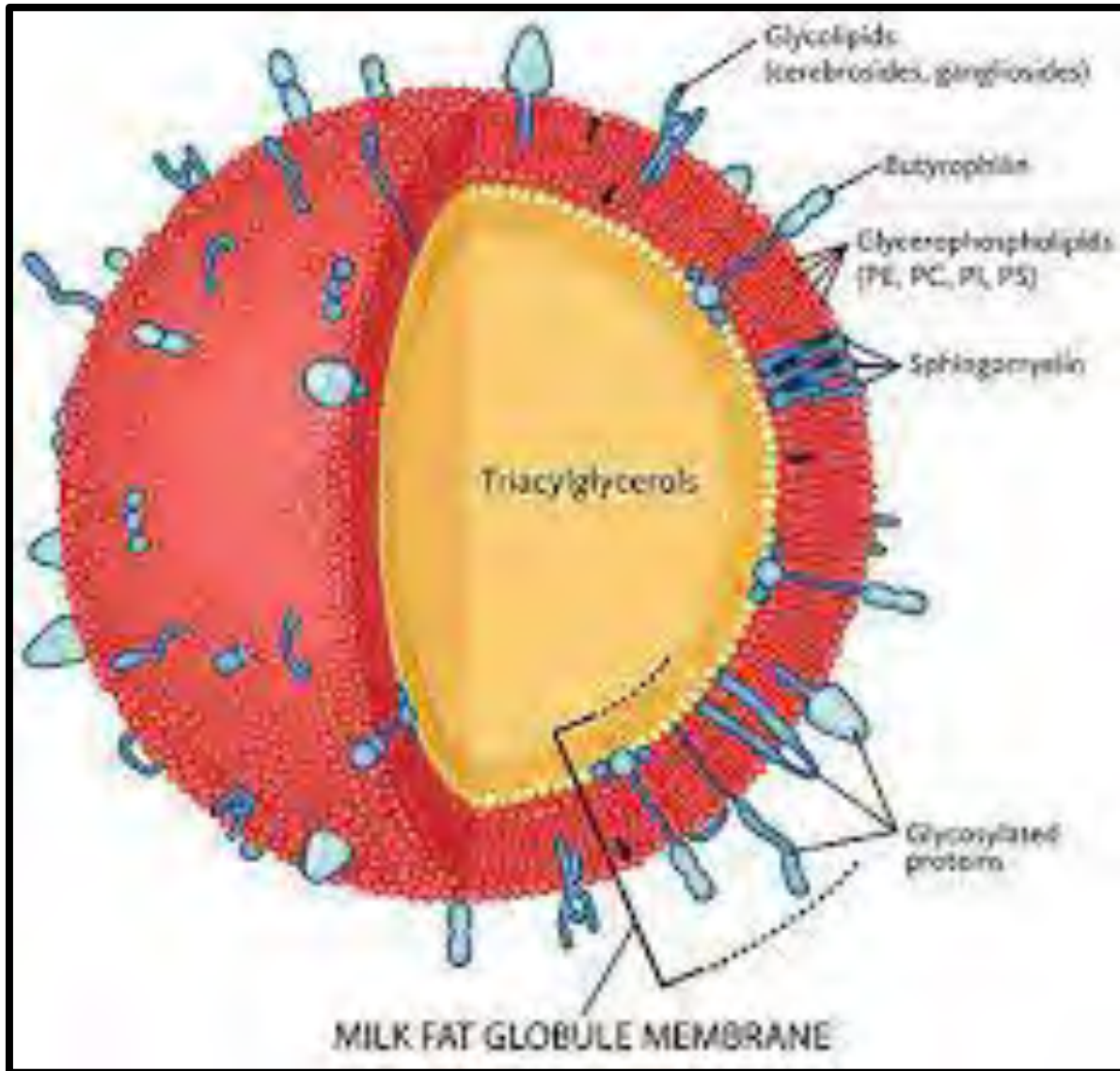












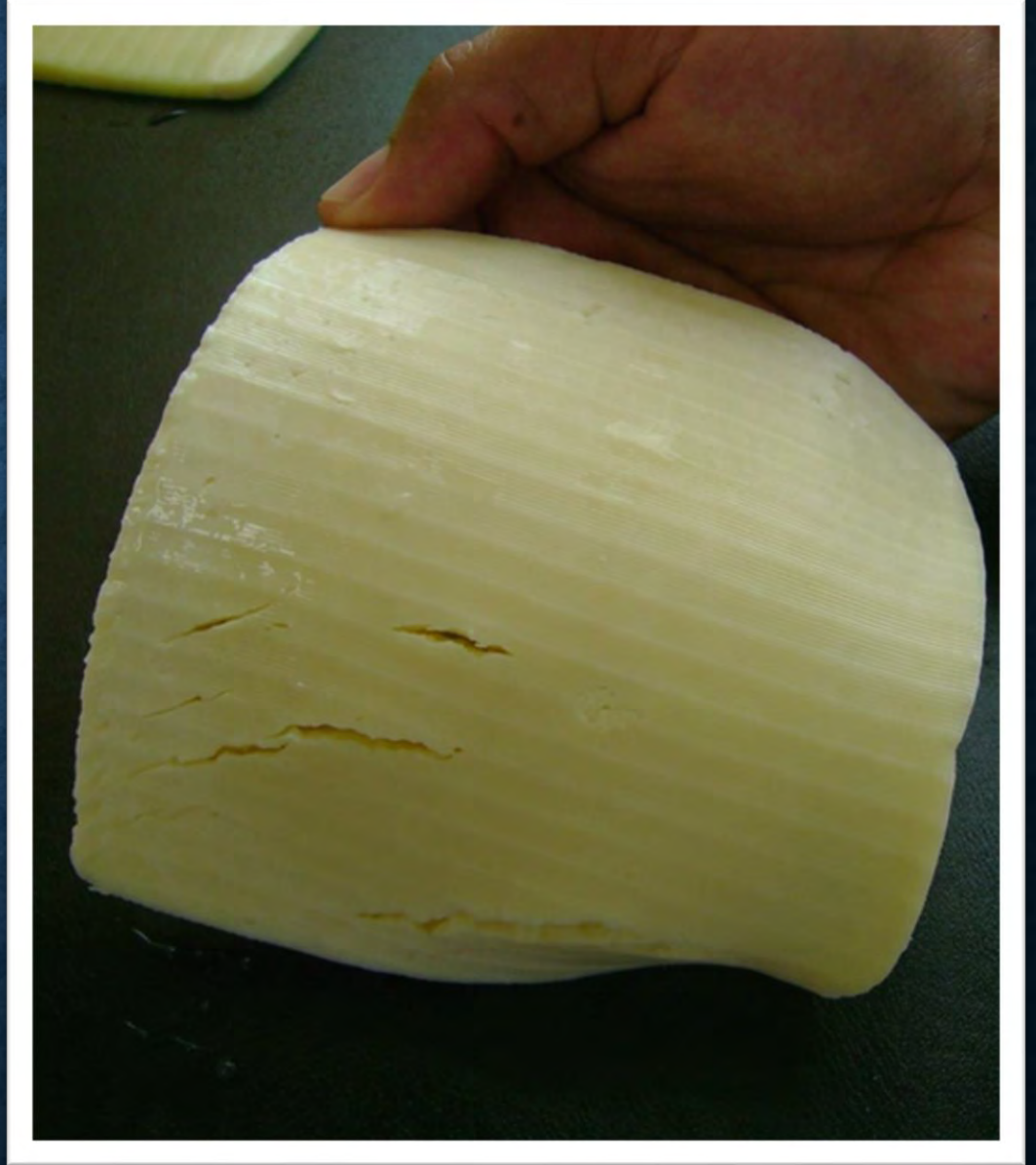
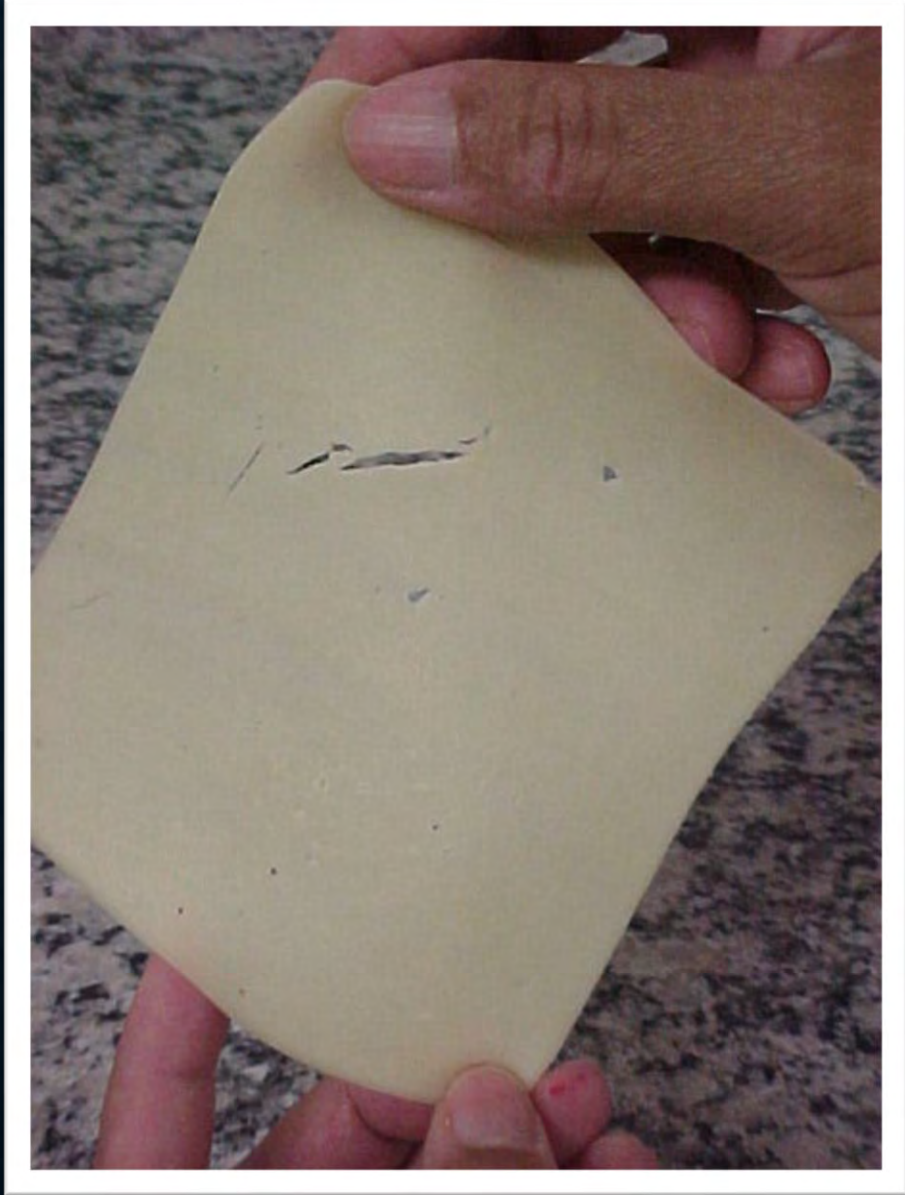




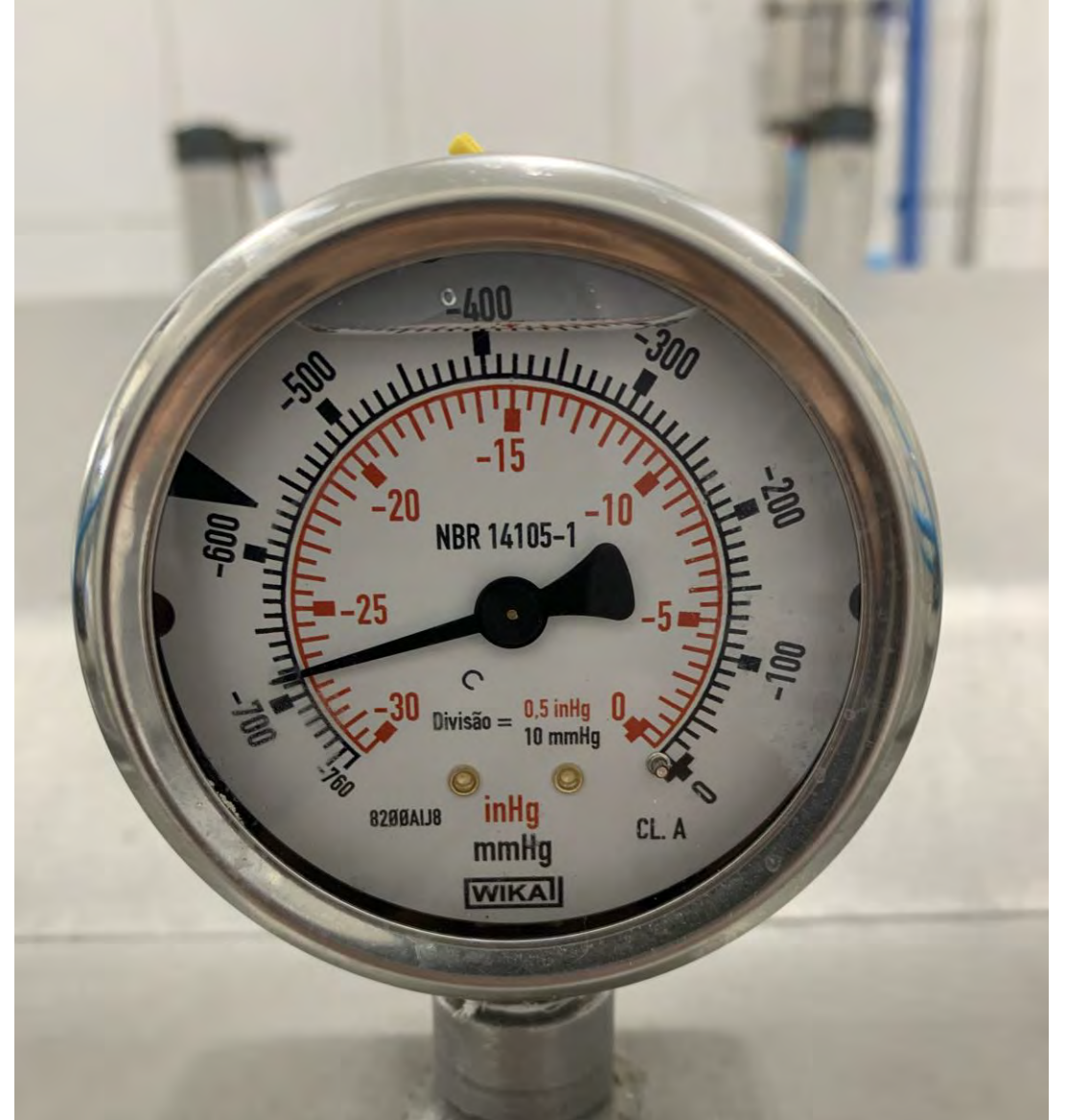












# Biofilm









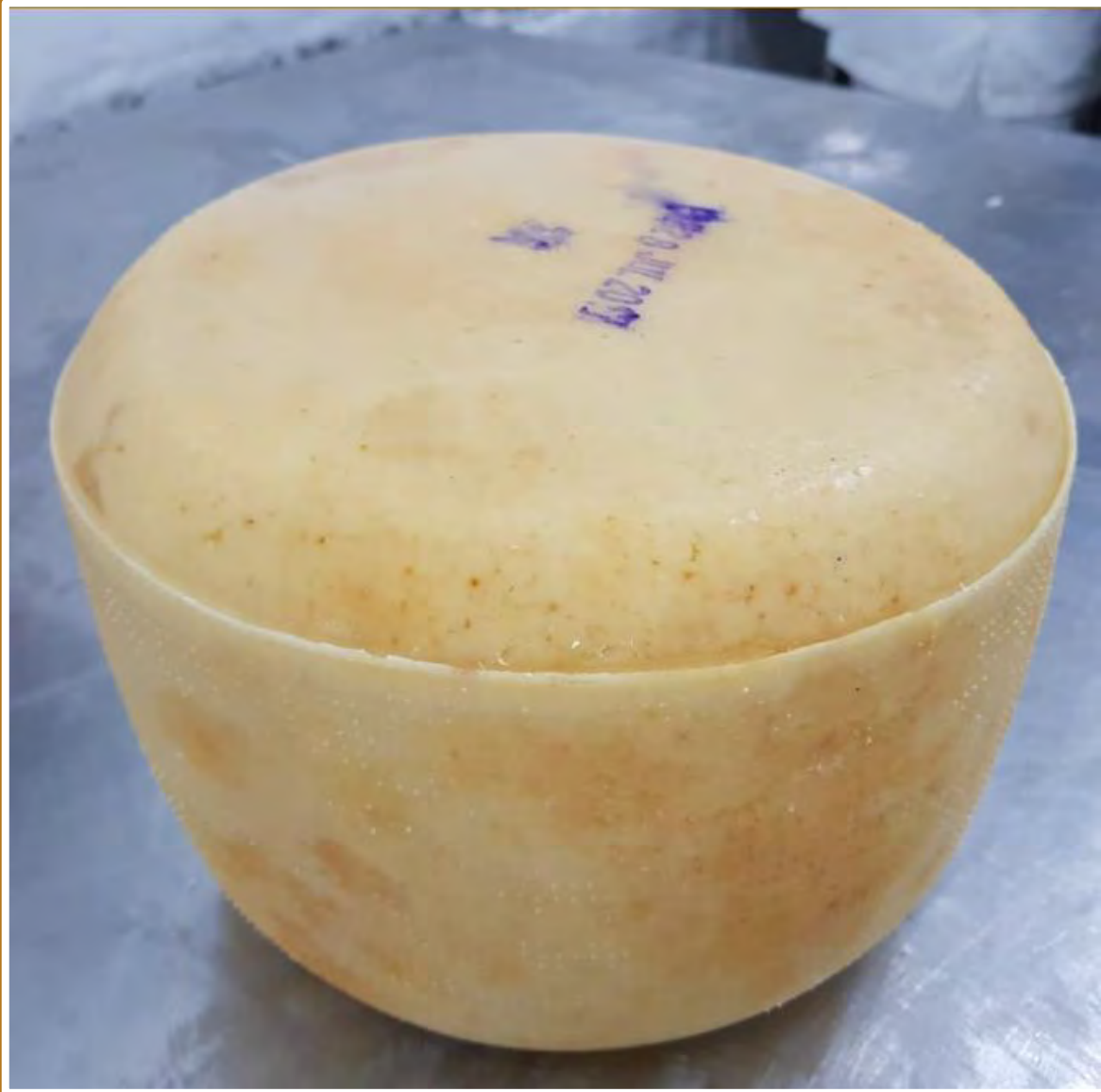
Public



Public





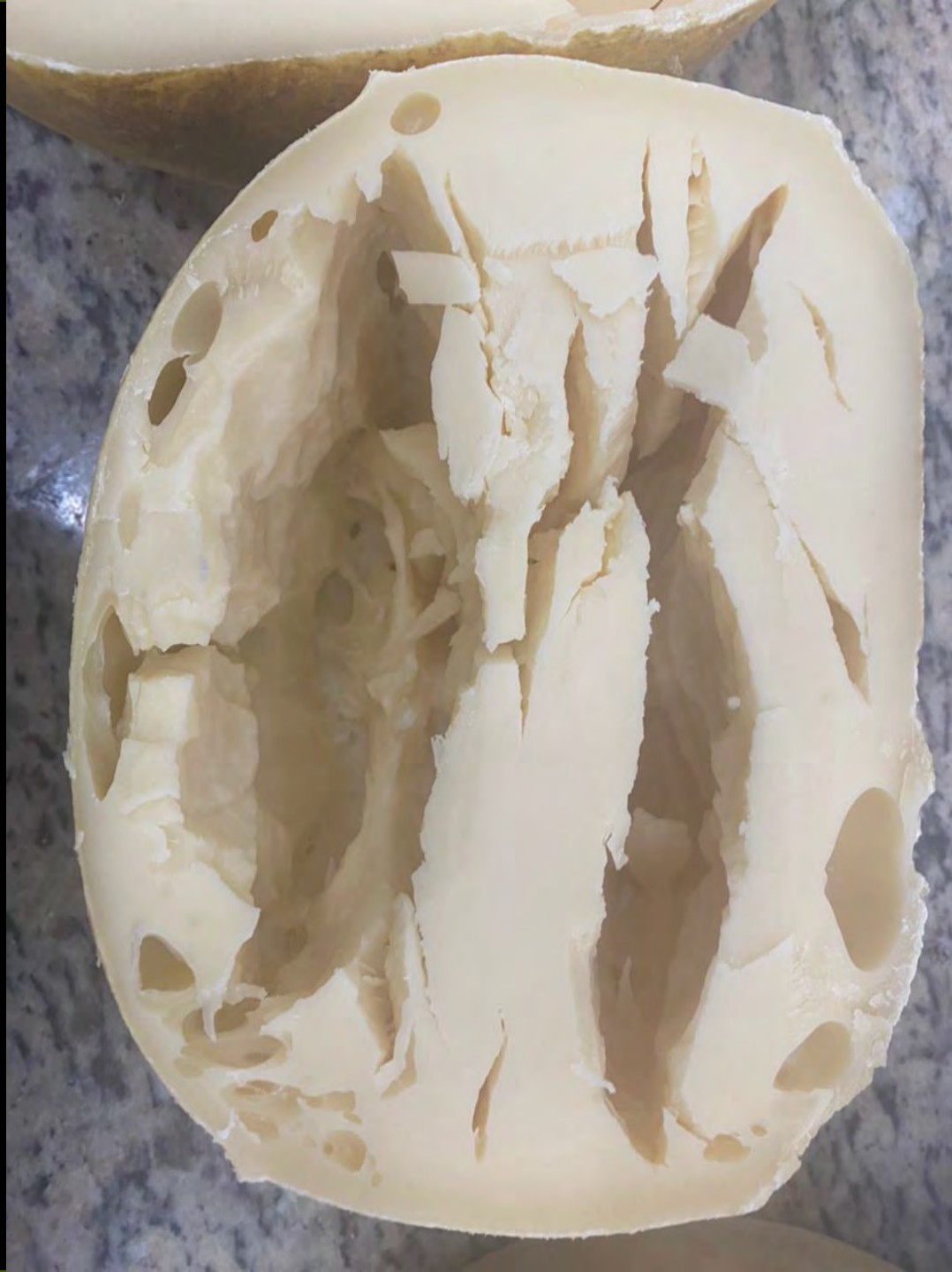














2009/07/30















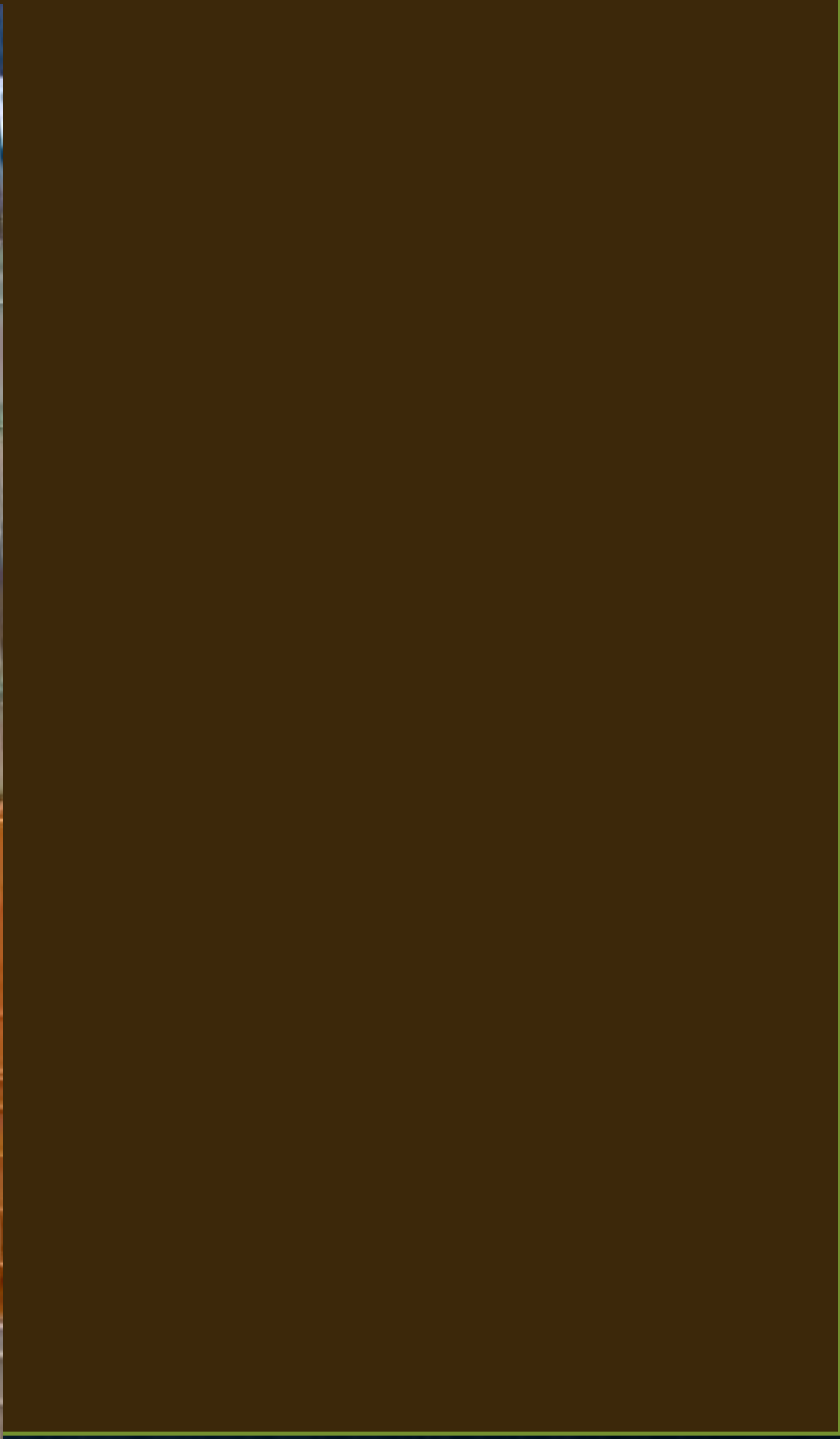


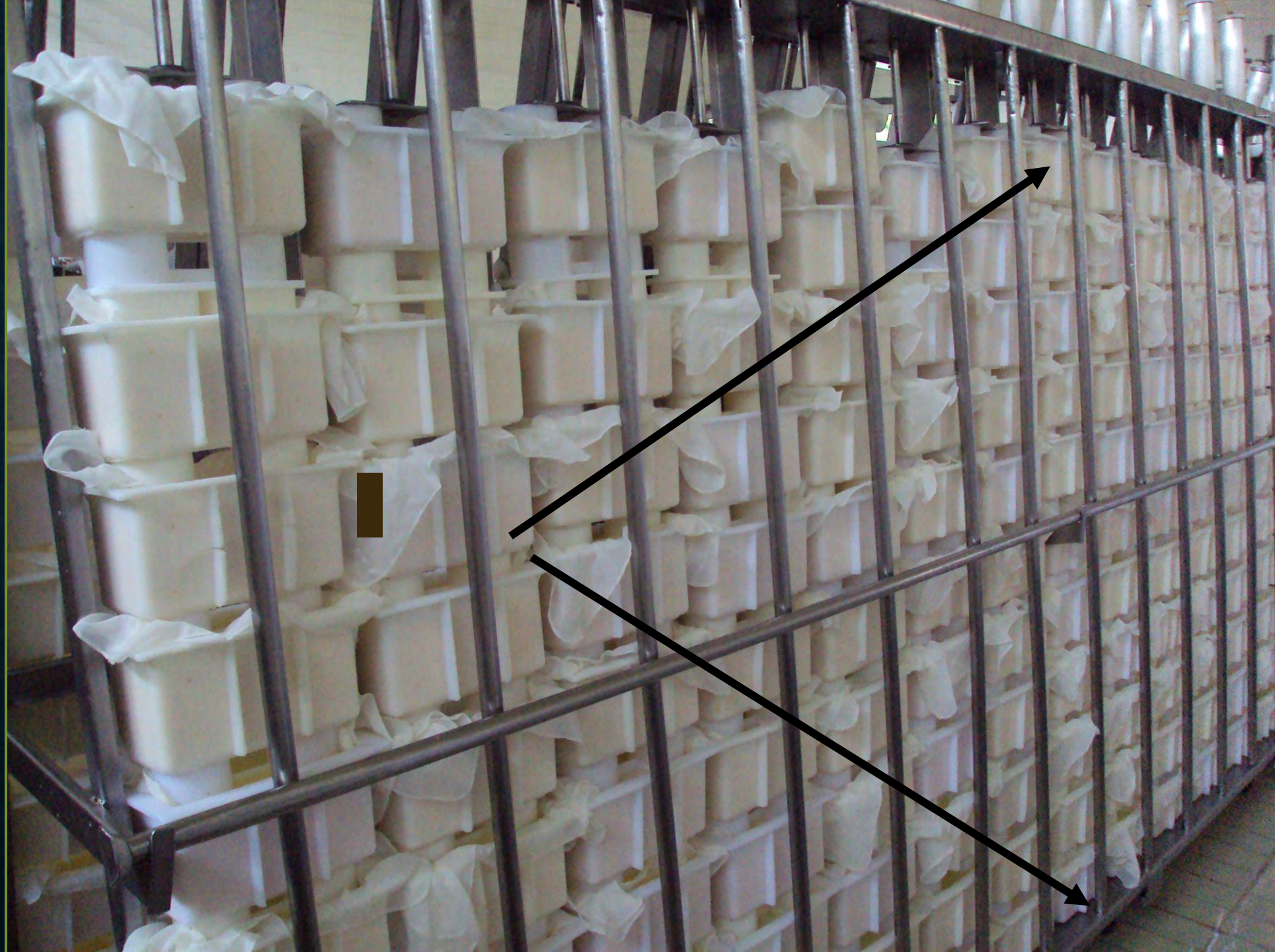


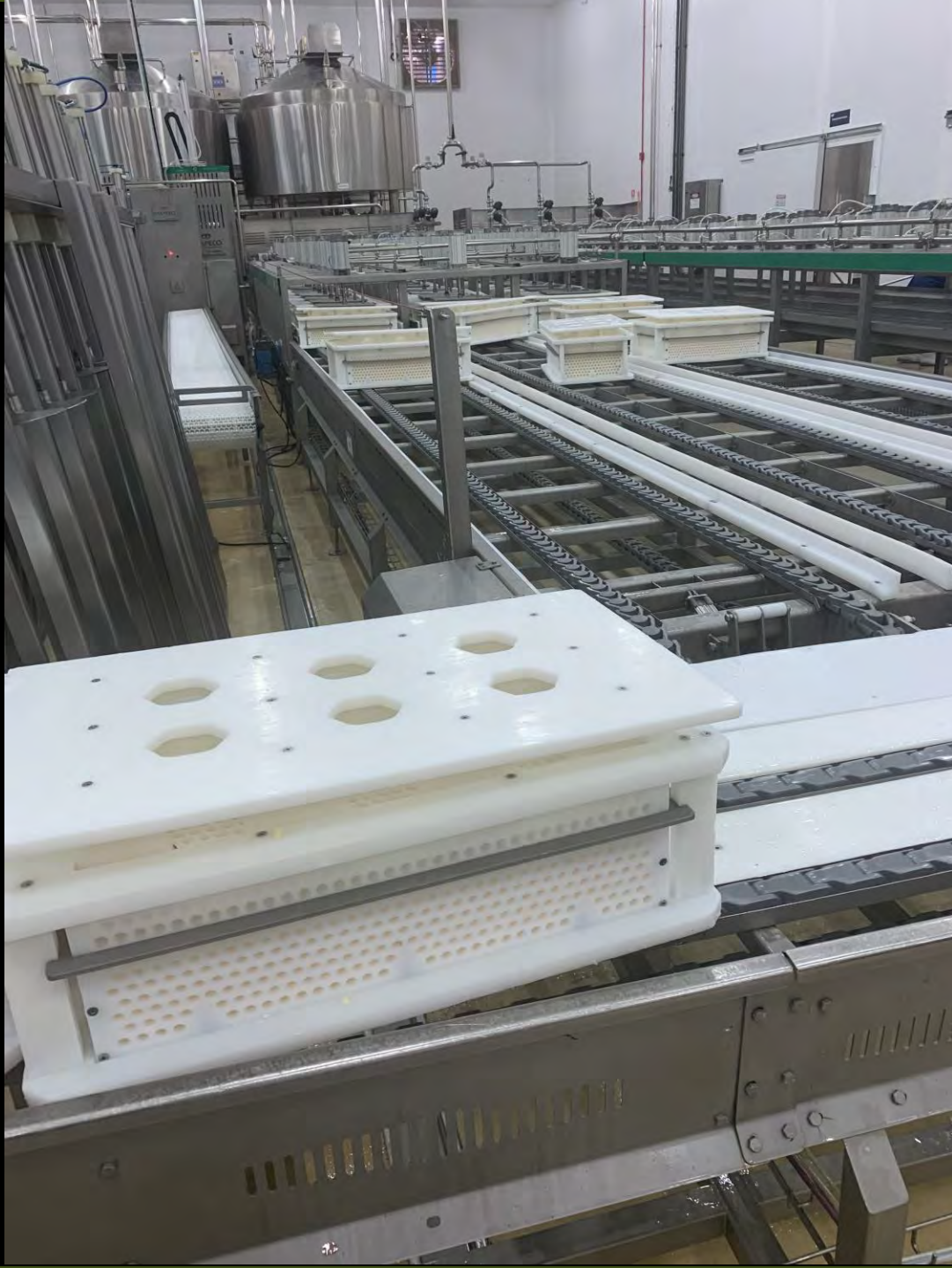






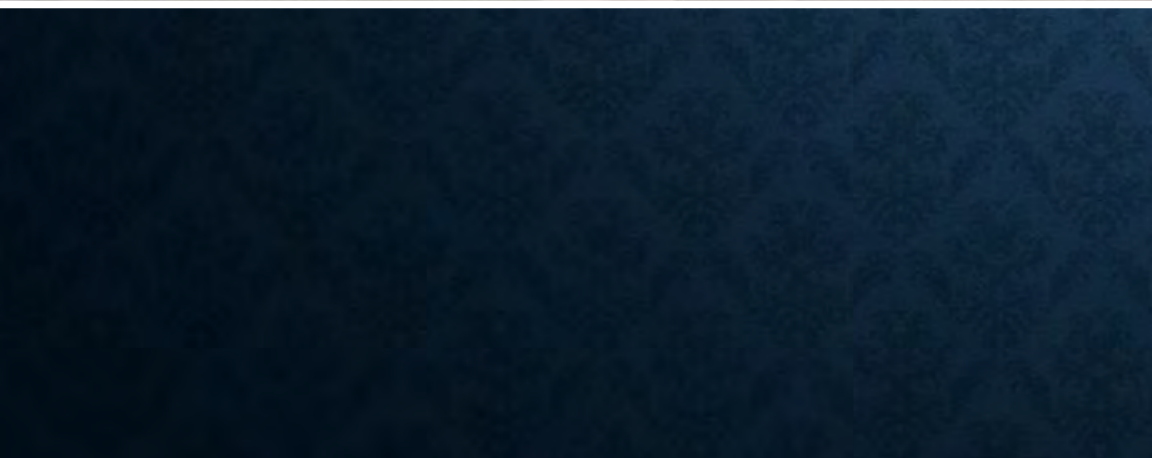














Valor energético: 200 kcal  
Proteína: 10g  
Lactose: 10g  
Cálcio: 100mg

Os valores diários são baseados em uma dieta de 2.000 kcal ou 8.400 kJ.  
Seus valores diários podem ser maiores ou menores dependendo de suas necessidades energéticas. (\*) VD não estabelecido.

**INGREDIENTES: SORO DE LEITE, LEITE PASTEURIZADO  
DESIGNADO E ACIDULANTE ÁCIDO ACÉTICO (INS 260)  
ALÉRGICOS: CONTÉM LEITE E DERIVADOS. CONTÉM  
LACTOSE. NÃO CONTÉM GLÚTEN.**

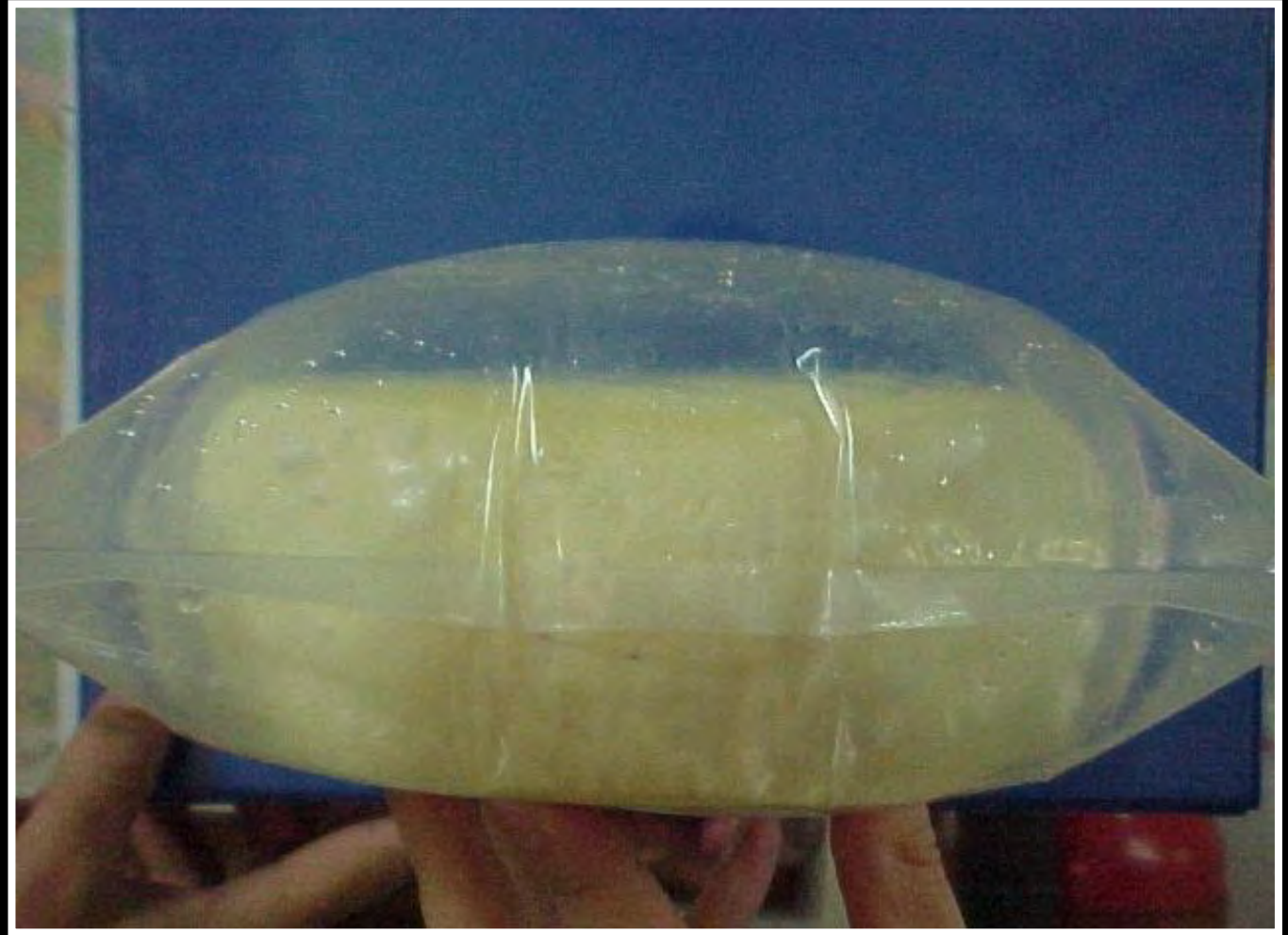
Peso da embalagem: 4g.

Após aberto, manter refrigerado de 4°C a 8°C e consumir em até 5 dias, respeitando o prazo de validade.

MINISTÉRIO DA AGRICULTURA  
**BRASIL**  
INSPICIONADO  
**S.I.F**



SAC: 11 3787 2300 - [www.queijosipanema.com.br](http://www.queijosipanema.com.br)









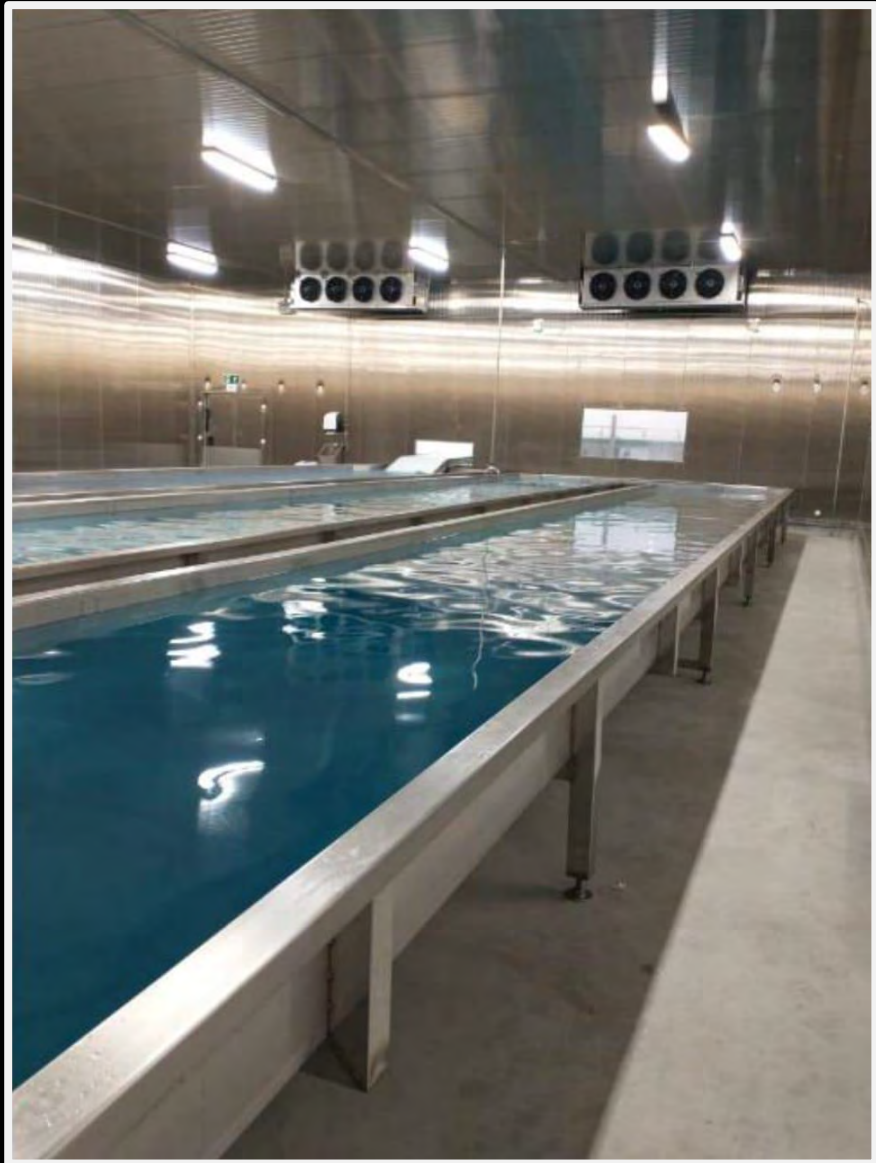














TANQUE DE  
SALGA

















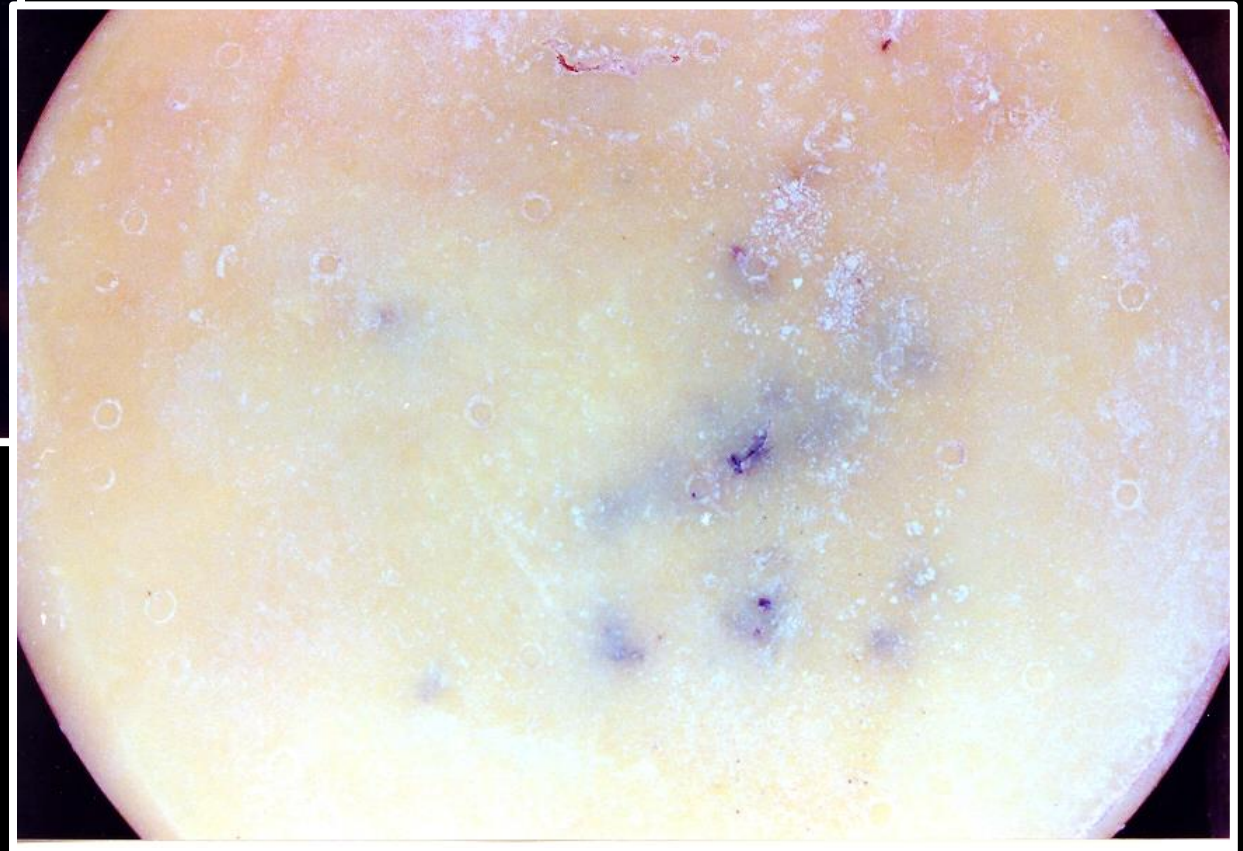






















*[mucio.furtado@iff.com](mailto:mucio.furtado@iff.com)*

11 97281- 6346